

Center for Evalu
and Developm

Key findings of the impact evaluations of EUTF-funded TVET

Thomas Eekhout

M&E Specialist (C4ED)

April 2024

- Strengthen the skills, employability and improve employment of vulnerable groups:
 - Not in Employment, Education nor Training (NEET)
 - Youth
 - Female
 - Returning migrants (in Sahel Lake Chad)
 - Refugees and host communities (in the Horn of Africa)
 - Internally displaced persons (IDPs)

- Tackle root causes of irregular migration & better understand the drivers and dynamics behind forced displacement and migration.



The evaluation strategy

84 contracts
in HoA and SLC

Mainly qualitative
research

7 rigorous impact
evaluations
(3 RCTS, 1 DID, 3 matching)

Literature
review

4 TVET

Findings and recommendations



- Overall, effective promotion of employment
- Decent employment tends to materialise by opening/developing an IGA.

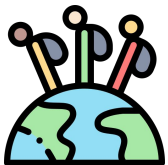


- No clear connexion between migration and TVET

Findings and recommendations



- **Overall, effective promotion of employment**
- **Decent employment tends to materialise by opening/developing an IGA.**
 - Combine technical and entrepreneurial trainings.
 - Provide financial and/or material support to open IGA.
 - Provide additional support for vulnerable populations (females and refugees).
 - Include health promotion modules (especially for manufacturing sectors).



- **No clear connexion between migration and TVET**

Findings and recommendations



- Overall, effective promotion of employment
- Decent employment tends to materialise by opening/developing an IGA.

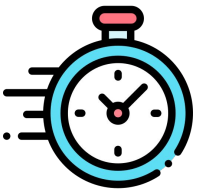


- **No clear connexion between migration and TVET**
 - No clear willingness among targeted population
 - No clear objective from evaluated programmes to reduce intentions to migrate
 - No clear impacts of TVET on migration
- To reduce irregular migration, promotion of decent employment is probably not the most cost-effective approach.

Findings and recommendations



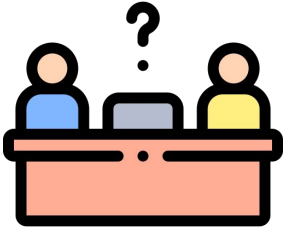
High levels of dropouts & no-shows



**Short time-frame between end of programme and data
collection**

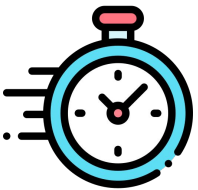
[

Findings and recommendations



High levels of dropouts & no-shows

- Identify candidates that are likely to follow the training
- Reduce direct and indirect costs of training
- Need to monitor project activities and beneficiary participation

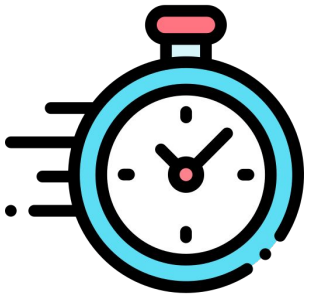


Short time-frame between end of programme and data collection

Findings and recommendations



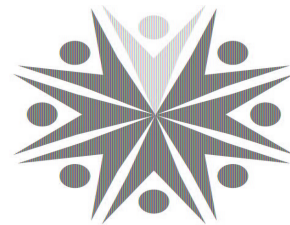
High levels of dropouts & no-shows



Short time-frame between end of programme and data collection

- Delay data collections to capture long term impacts
- Limit locked-in effects

Thank you!



Center for Evalu
and Developm